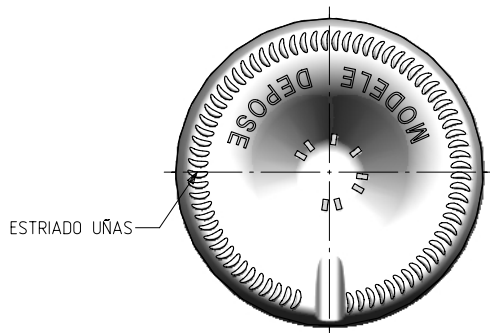
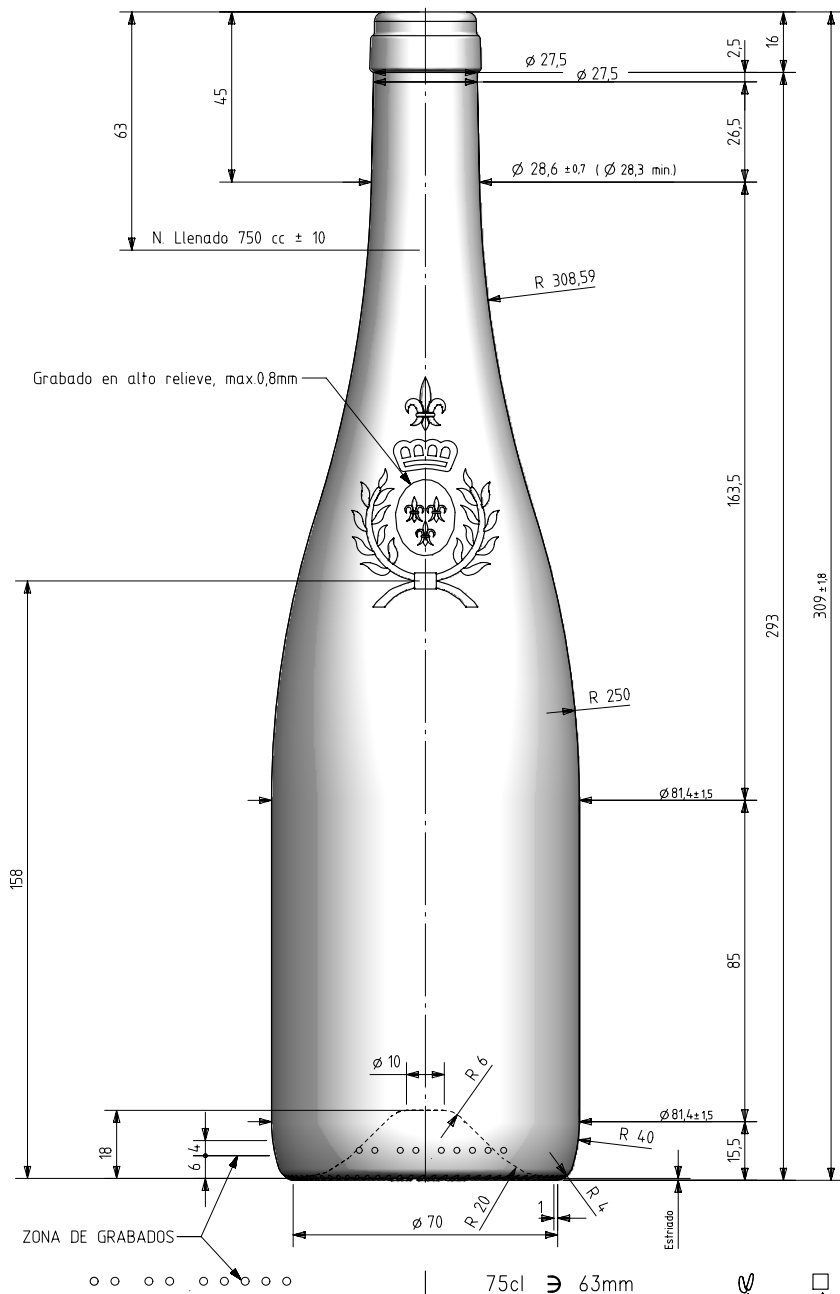


ANJOU NATURA 75 CL

Caractéristiques du produit

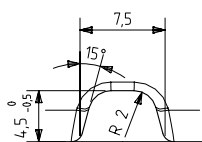
Code	2037/242
Capacité	750 ml
Bague	CORCHO CETIE
Couleurs	
Poids	455 gr
Hauteur totale	309.00 mm
Diamètre	81.40 mm
Palette	1.164 Unités



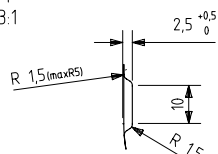
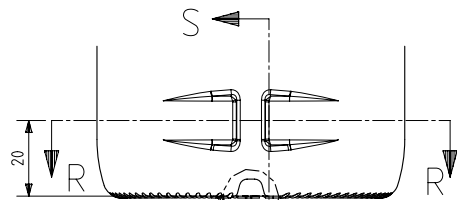


VISTA DEL FONDO

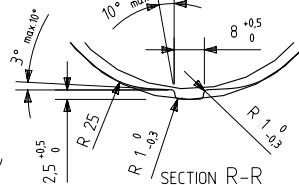
N° MOLDE
ANAGRAMA




DETALLE T
ESCALA 3:1



SECTION S-S



SECTION R-R

				Peso aprox / Weight approx	455 gr		Product Design Office www.vidrala.com
				Capacidad N. llenado / Fillpoint Capacity	750 cc ± 10 a 63,0 mm		
				Capacidad a verter / Brimfull Capacity	770,0 cc ± aprox		
				Cámara expansión / Expansion Chamber	2,7 %	Dibujado / Des : J. Arandia	CAD: 7229-1prt
				Recipiente medida / Meas cap	SI	Fecha / Date: 26-02-14	Anula / Annuls: 7229
1	Ajustado perfil	26-02-14	JAU	Angulo de volcado / Tilt angle	18,2°	Escala / Escala: 1:1 3:1	N° Plano: Drawing N°: 7229-1
Rev	Modificación / Modification	Fecha/Date	Firma/Sign	Carbonatación / Gas vol	0,0 Vol CO2 máx	Retornable / Refillable NO	59,4%
Este plano es propiedad de Vidrala, no puede ser reproducido ni comunicado sin nuestro permiso. Las cotas no toleradas son aproximadas. Specification agreements are based on toleranced dimensions only. Do not scale drawing, copyright reserved. Not to be copied in whole or part without written permission from vidrala. All dimensions are in millimeters.				Presión inf. max. (20°) / Max Pressure (20°):	0,00 Bar	Modelo:	ANJOU NATURA 75 CL
				Resistencia. choque térmico / Thermal Shock Max:	42 °C	Code: 2037/242	